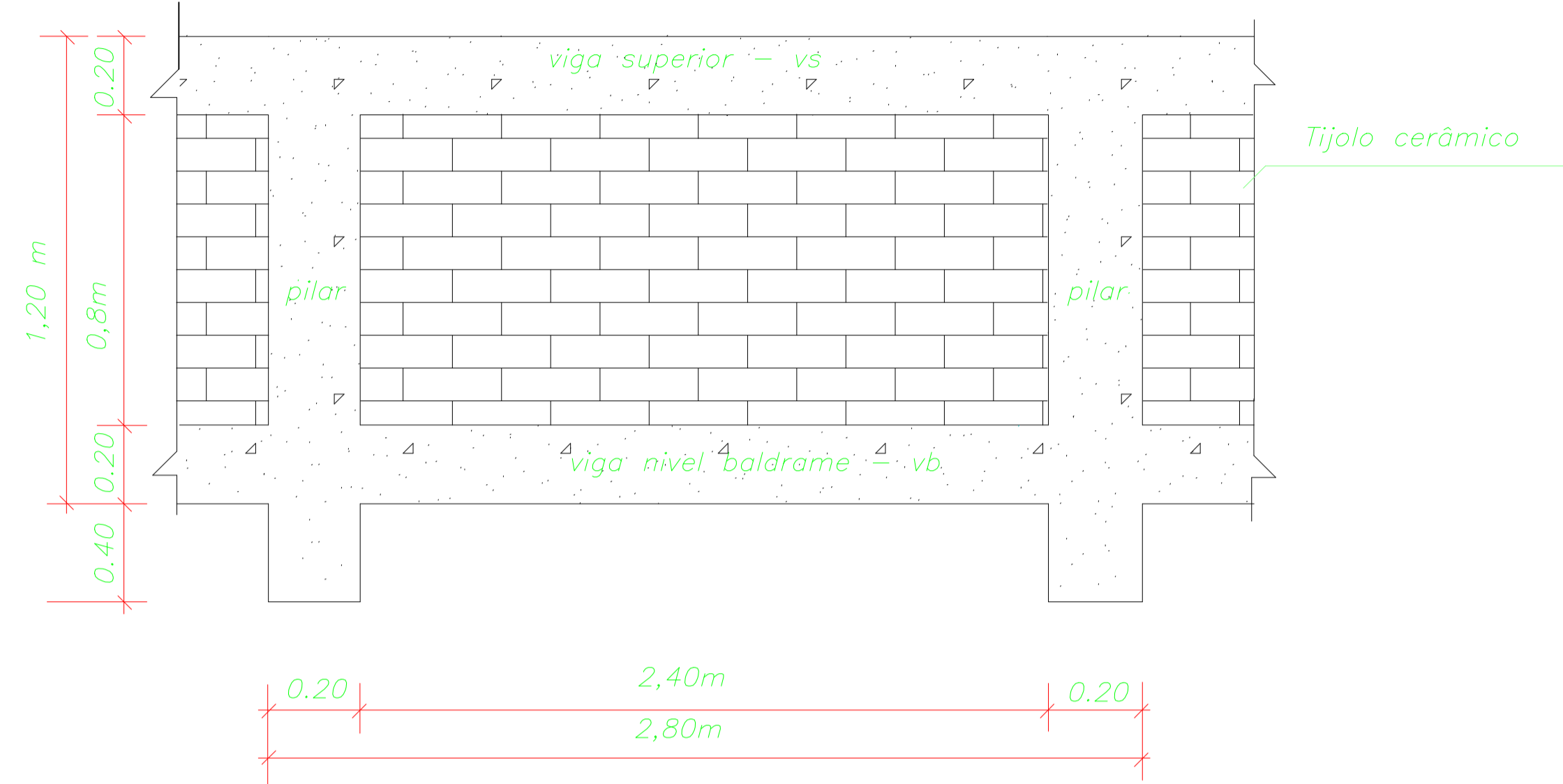


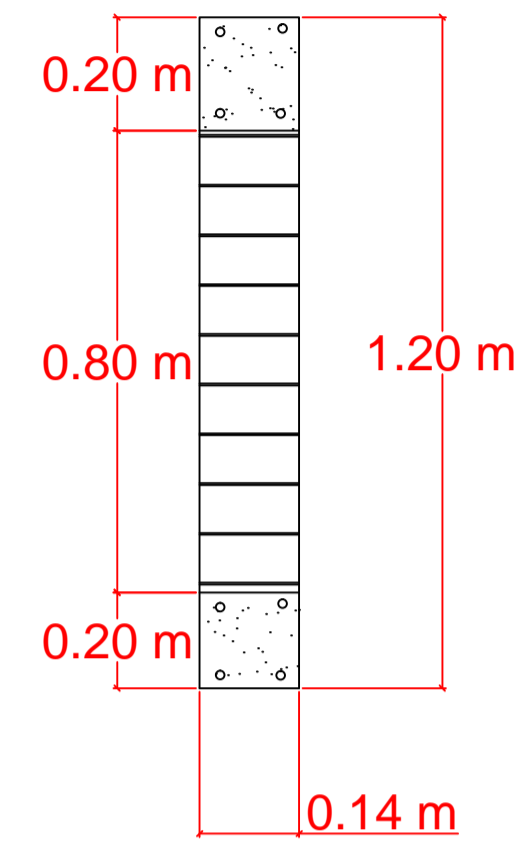
DETALHE MURO DE CONTENÇÃO

SEM ESCALA



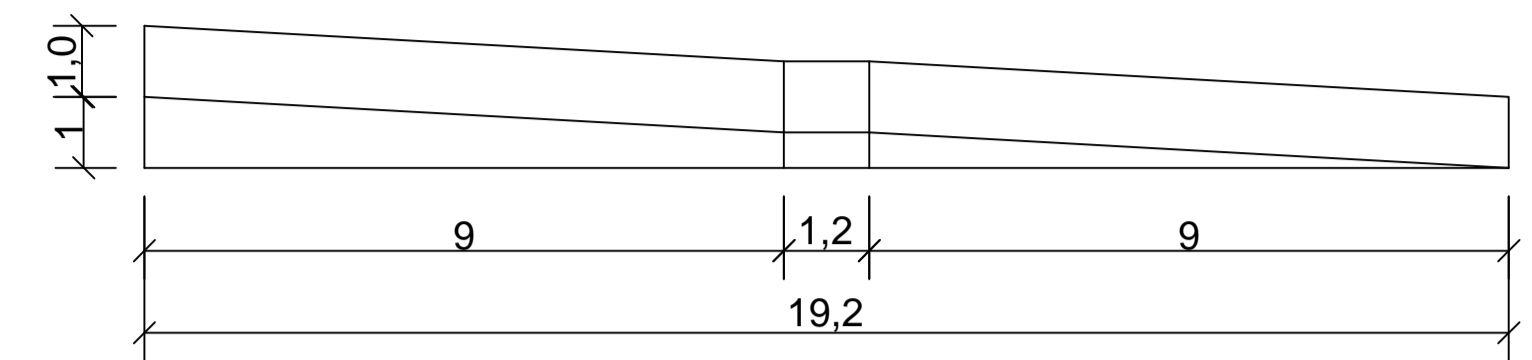
CORTE MURO DE CONTENÇÃO:

SEM ESCALA



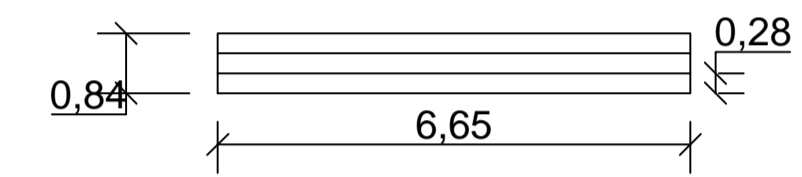
CORTE RAMPA

ESC: 1:100



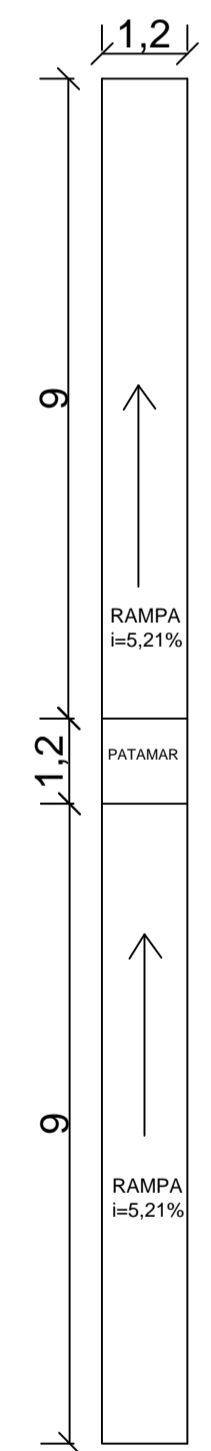
DETALHE ESCADA

ESC: 1:100



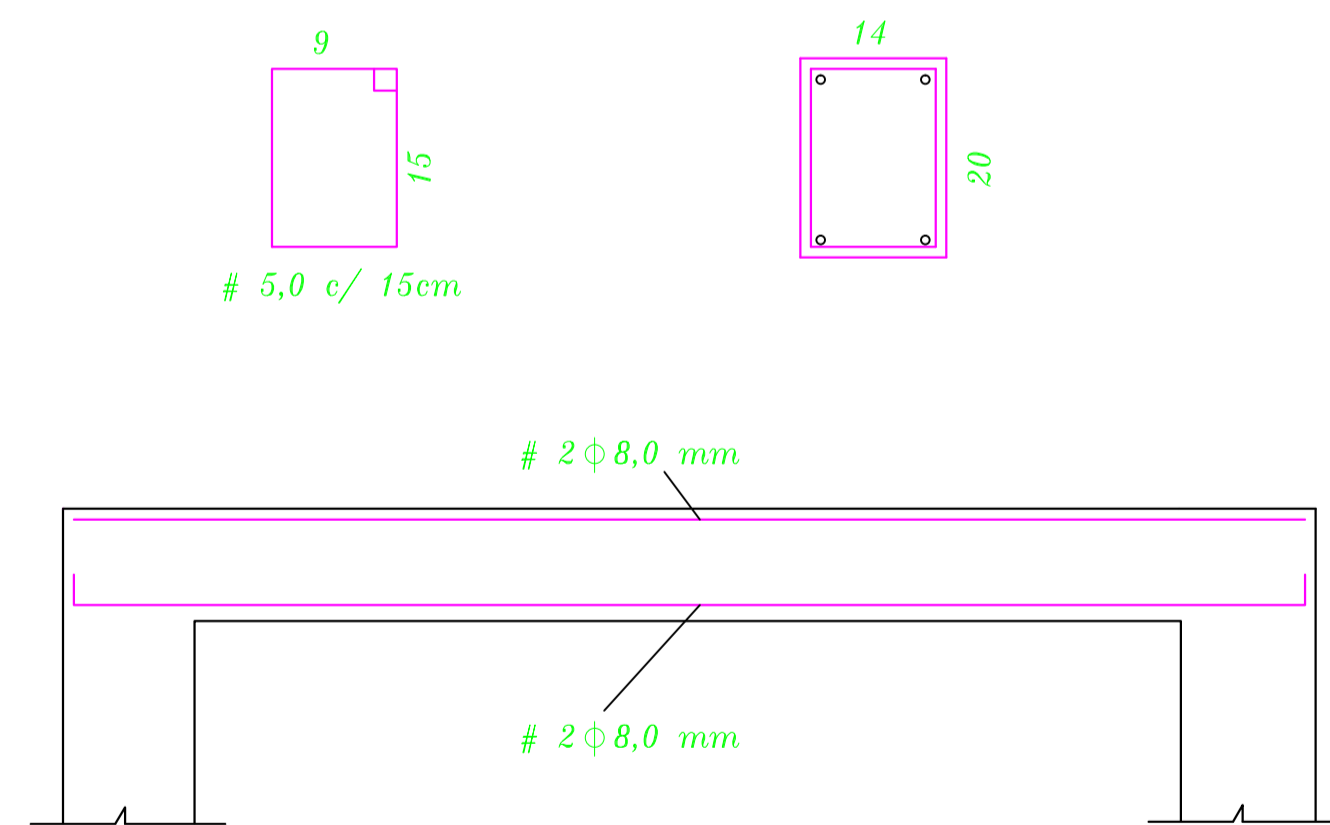
PLANTA BAIXA RAMPA

ESC: 1:100



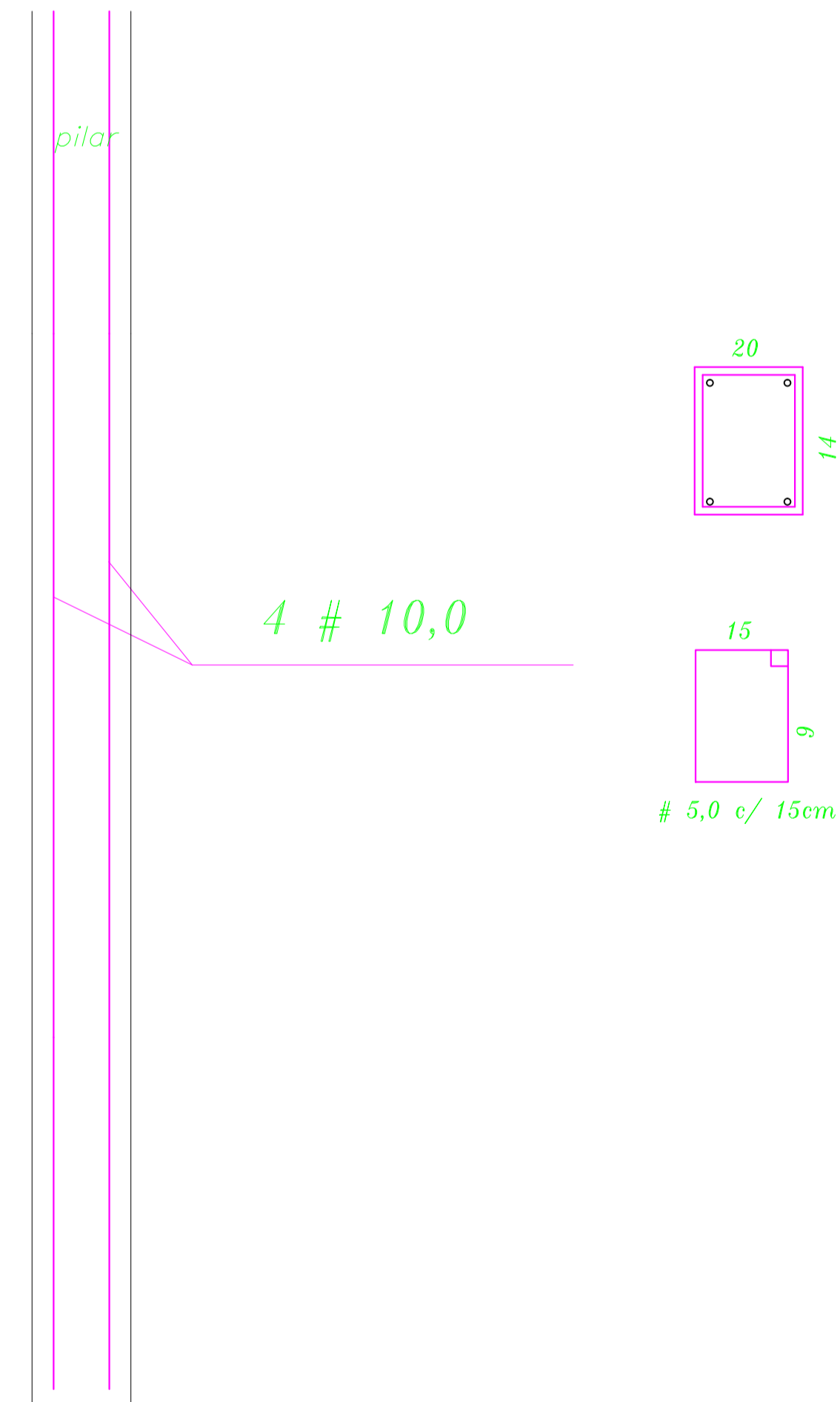
DETALHE ARMADURA VIGA SUPERIOR E INFERIOR

SEM ESCALA



DETALHE ARMADURA PILAR

SEM ESCALA



PREFEITURA MUNICIPAL DE XAXIM				
CARRA: PRAÇA PAC II		DETALHAMENTOS RAMPA ESCADA E MURO		
LOCAL: XAXIM - SC	ENGENHEIRO: RUA RIO GRANDE	BARRIO: BELA VISTA	EDIFICAÇÃO: PRAÇA PÚBLICA	
SOLICITANTE: PREFEITURA MUNICIPAL DE XAXIM		PRONOME:		
PROJETO: THAYNARA VERGINASSI CREA/SC - 133238-S		DETALHE 01/01		
DESENHO: THAYNARA VERGINASSI	DATA: MARÇO/2016	ÁREA TOTAL: 927,91m²		
ESCALA: INDICADA				