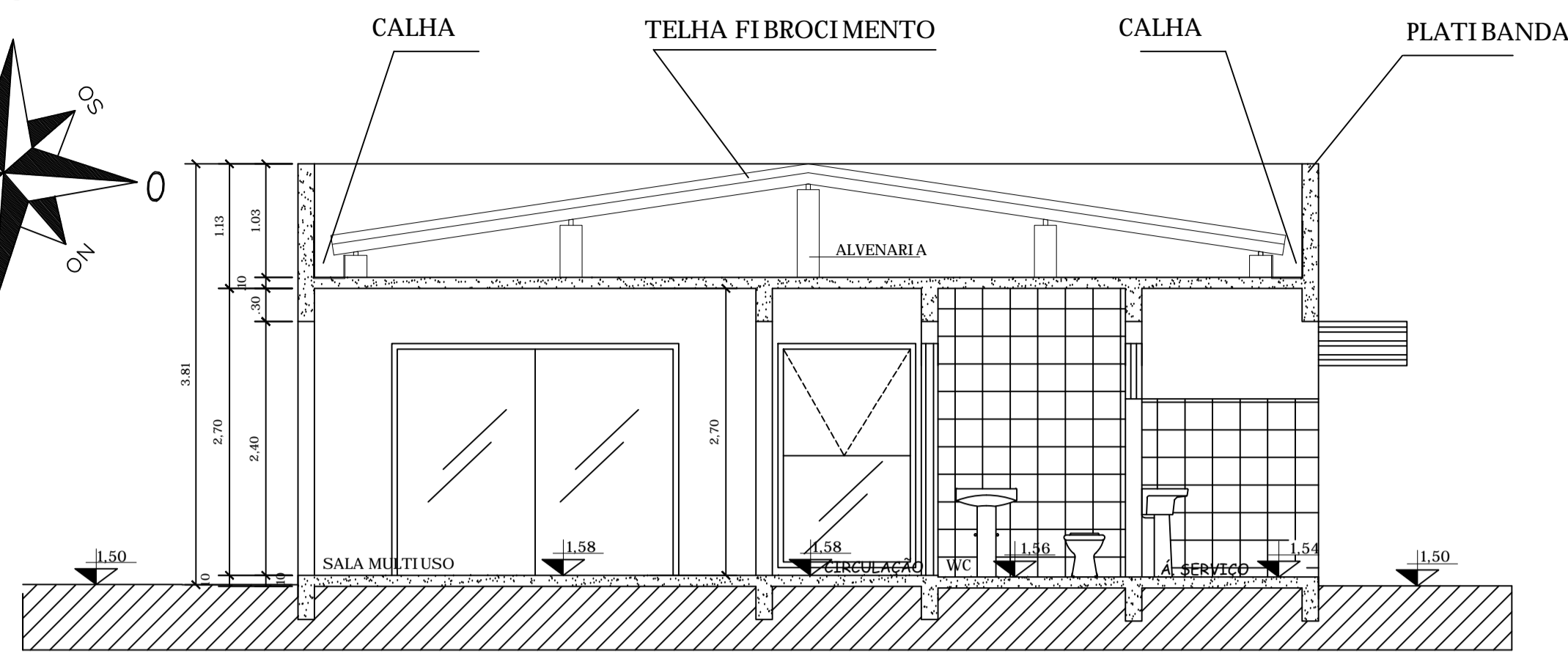
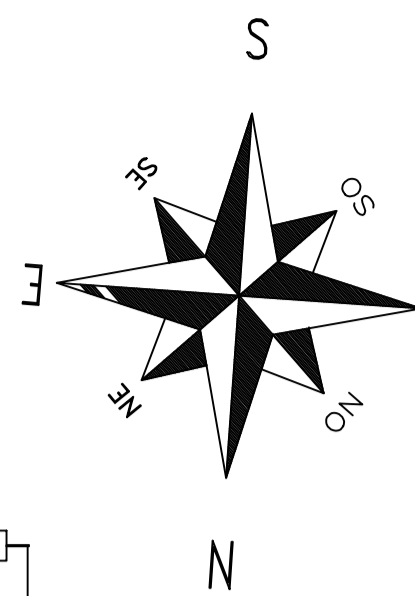
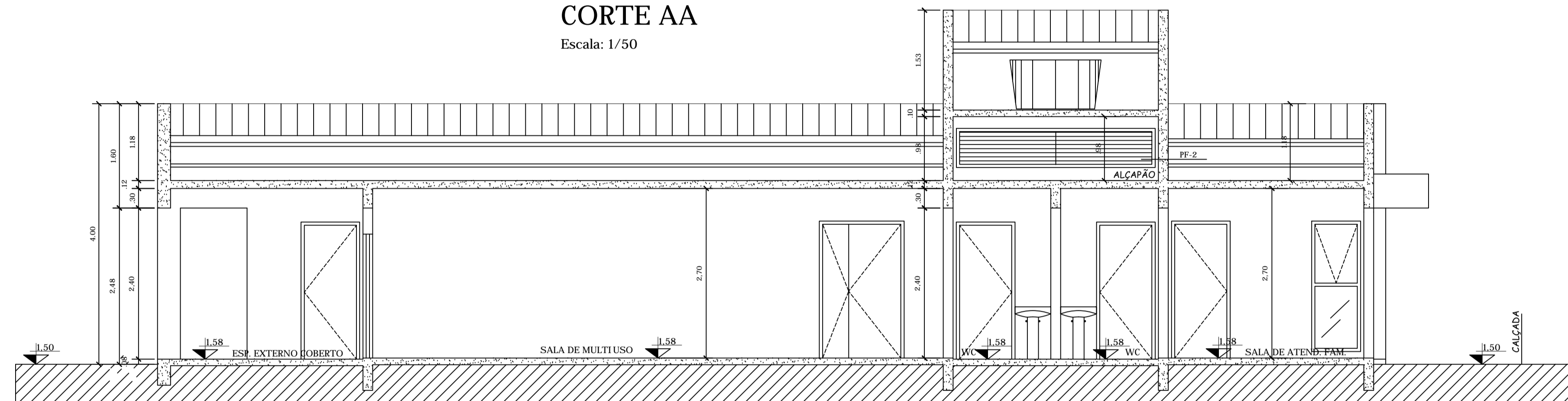


**PLANTA COBERTURA**  
Escala: 1/50

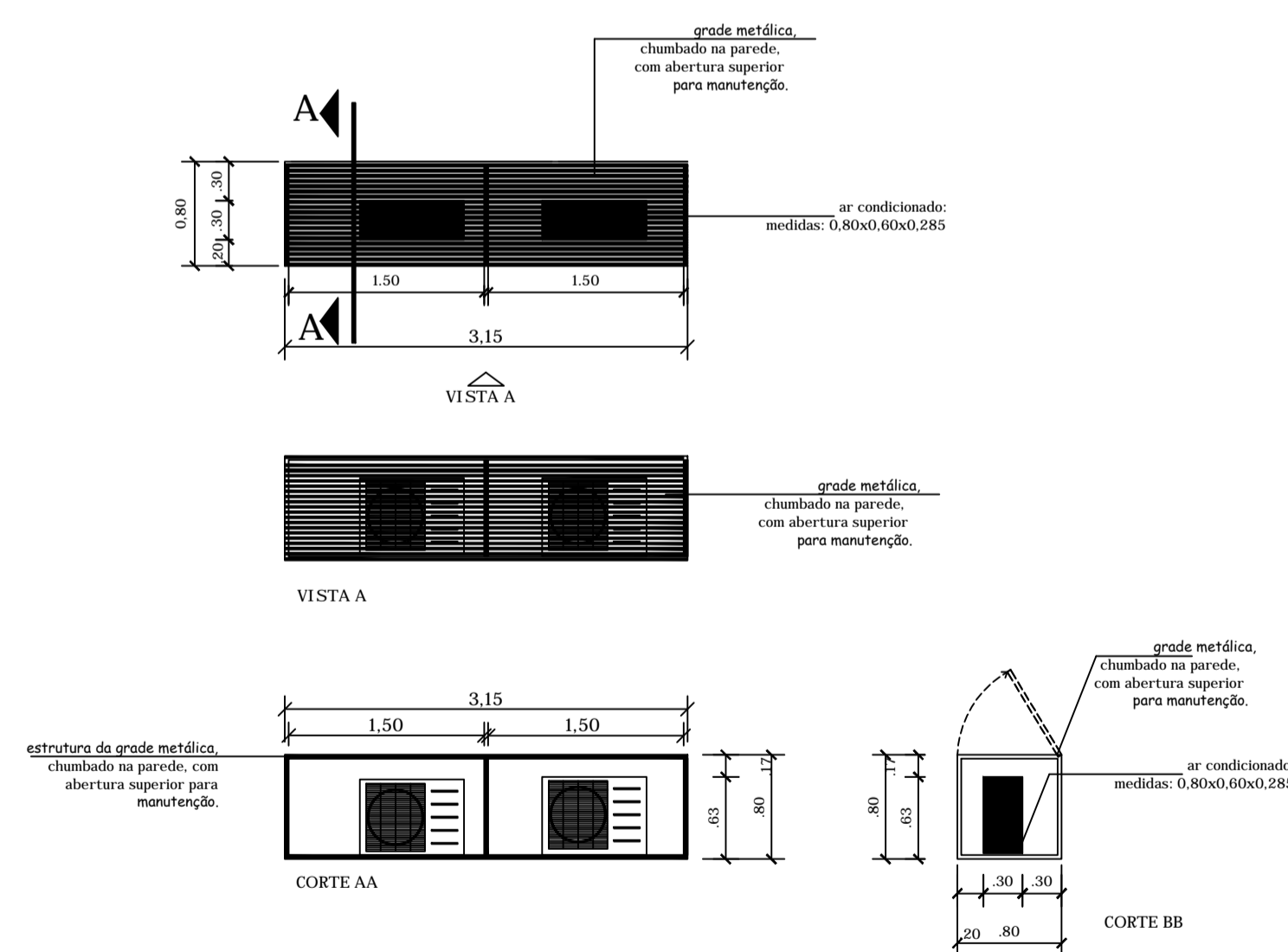


**CORTE AA**  
Escala: 1/50

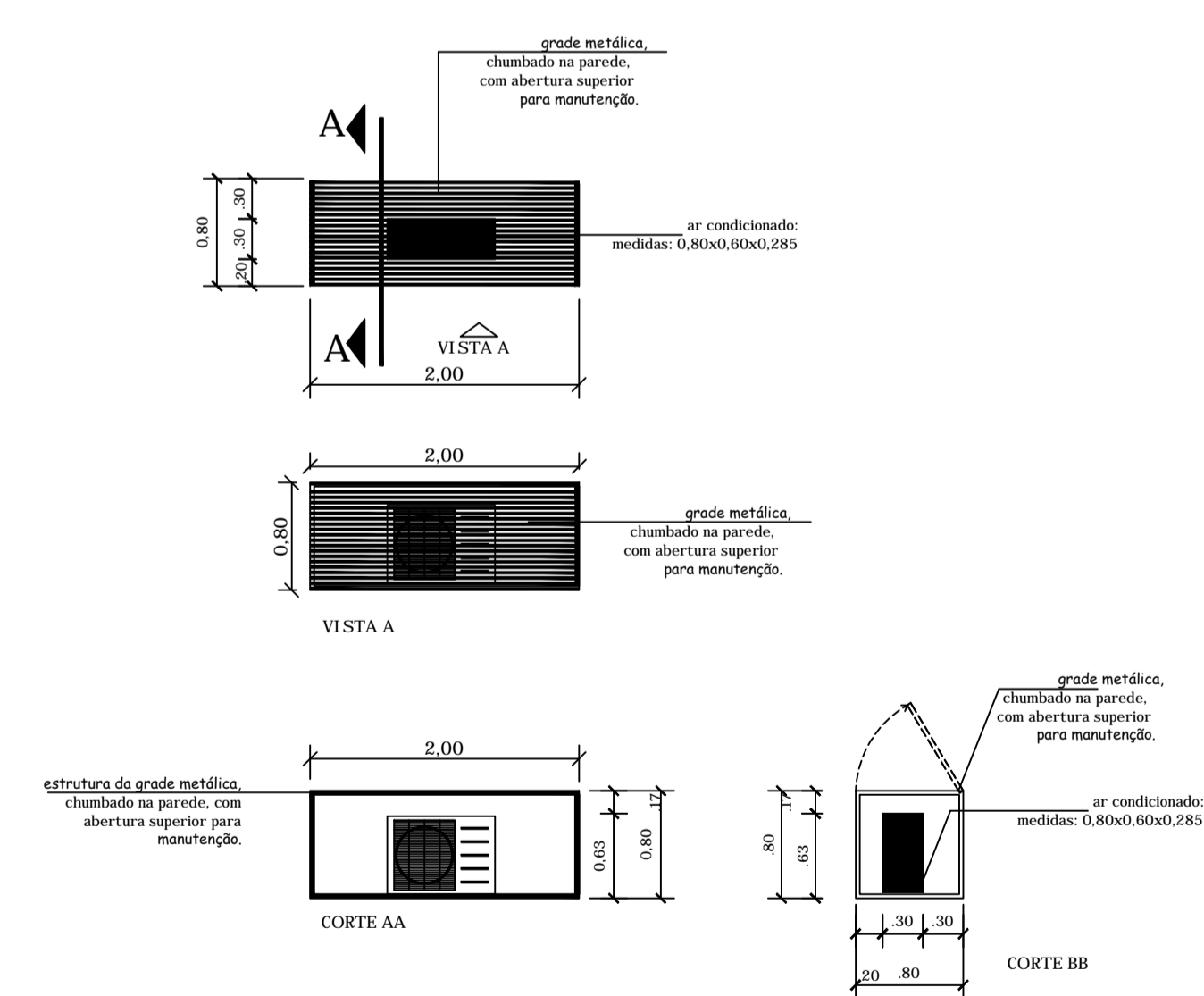


**CORTE BB**  
Escala: 1/50

**DETALHE CAIXA METÁLICA AR CONDICIONADO 1**



**DETALHE CAIXA METÁLICA AR CONDICIONADO 2**



**PREFEITURA MUNICIPAL DE XAXIM**

CDBA: <b>CRAS CHAGAS</b>		PROJETO ARQUITETÔNICO	
LOCAL: XAXIM - SC		COBERTURA, CORTE AA, CORTE BB, DETALHE GRADES AR	
ENDEREÇO: RUA PARANA	BARRIO: CHAGAS	EDIFICAÇÃO: ALVENARIA	
SOLICITANTE: PREFEITURA MUNICIPAL DE XAXIM		PRANCHAS: <b>ARQ. 03/03</b>	
PROJETO: EDUARDO SIMONATO CREA/SC - 038.383-0		DATA: JUNHO 2015	
DESENHO: Felipe Pallaro	ESCALA: INDICADA	ÁREA TOTAL: 165,30m²	