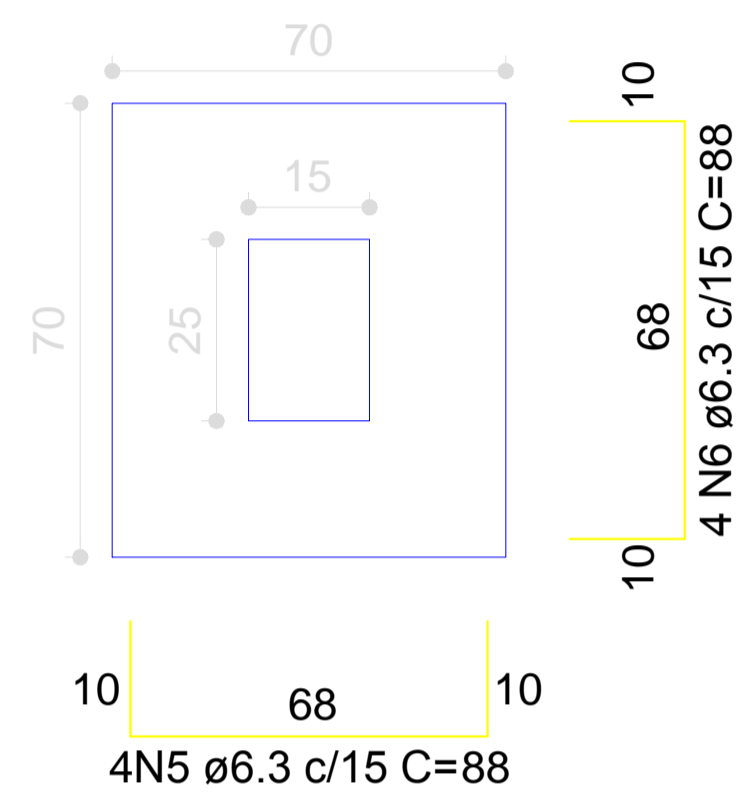
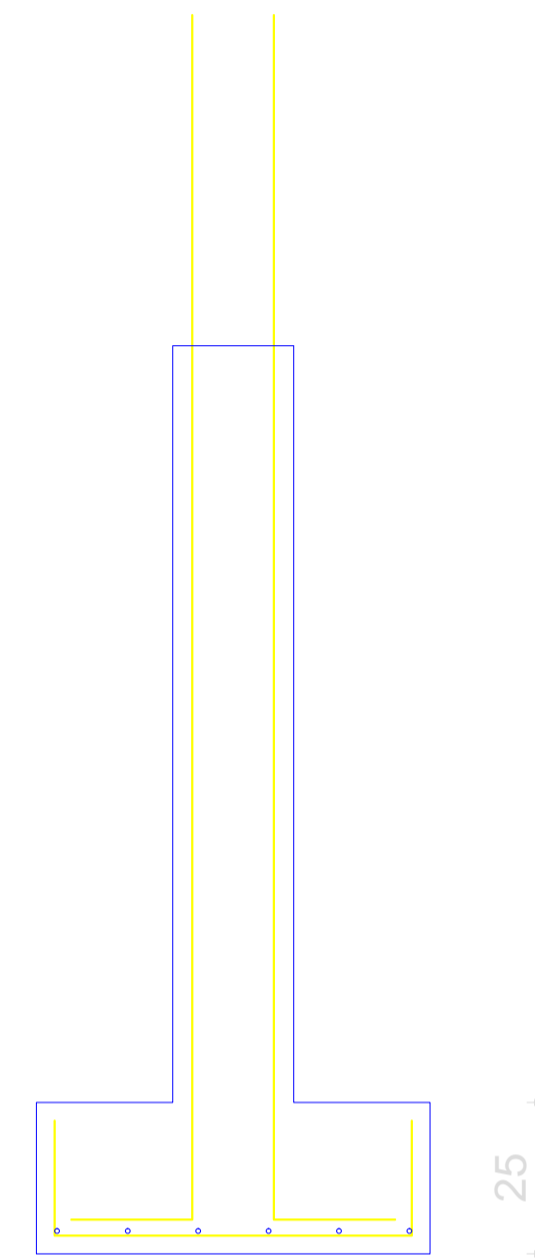


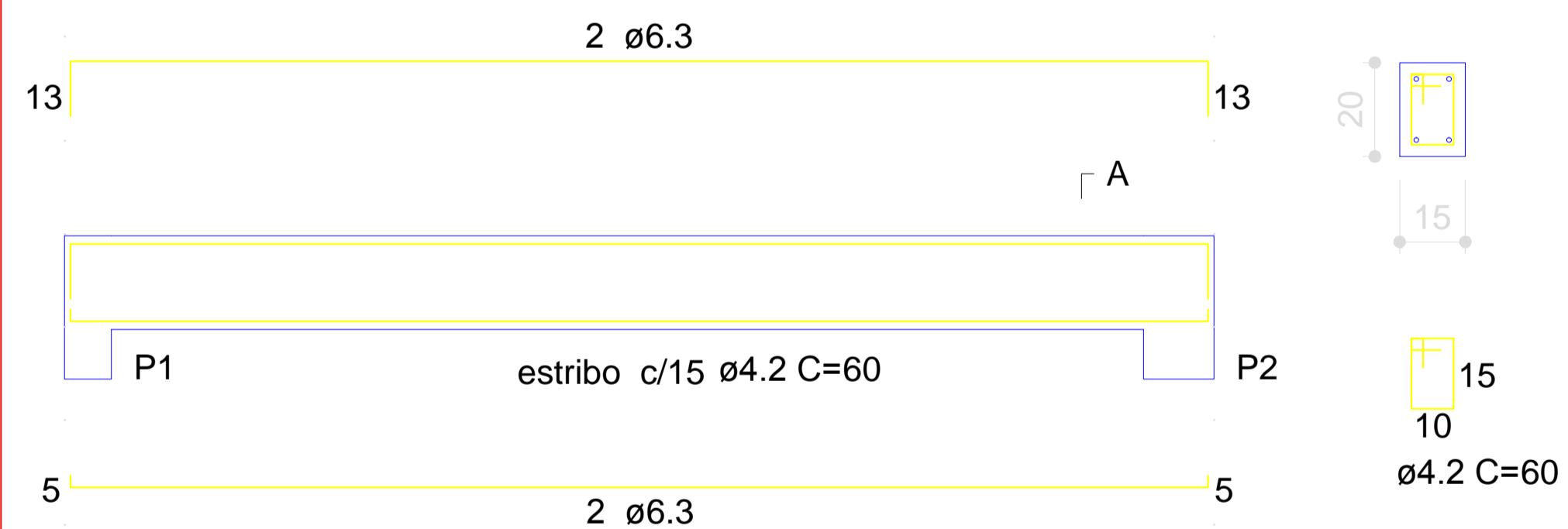
PLANTA DE FORMA  
Área: 39,60 m<sup>2</sup>



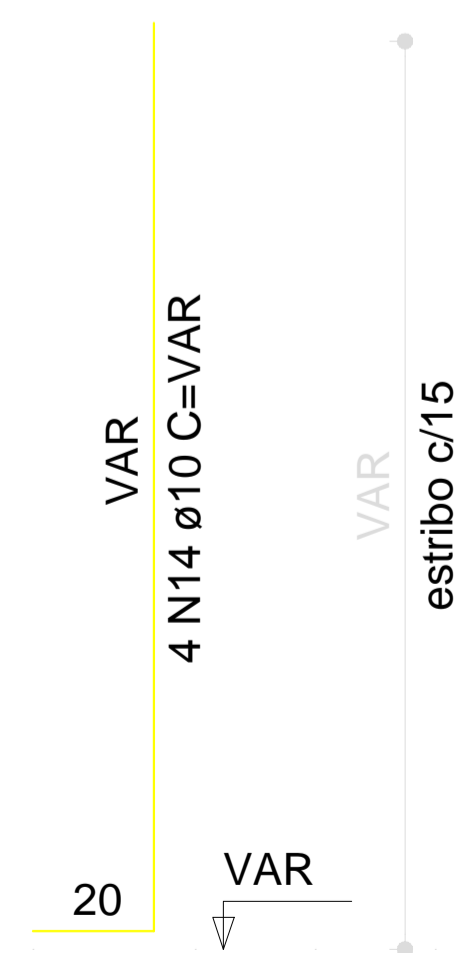
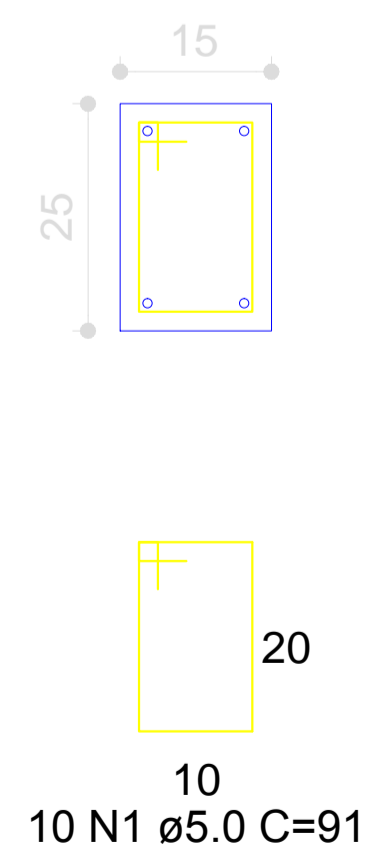
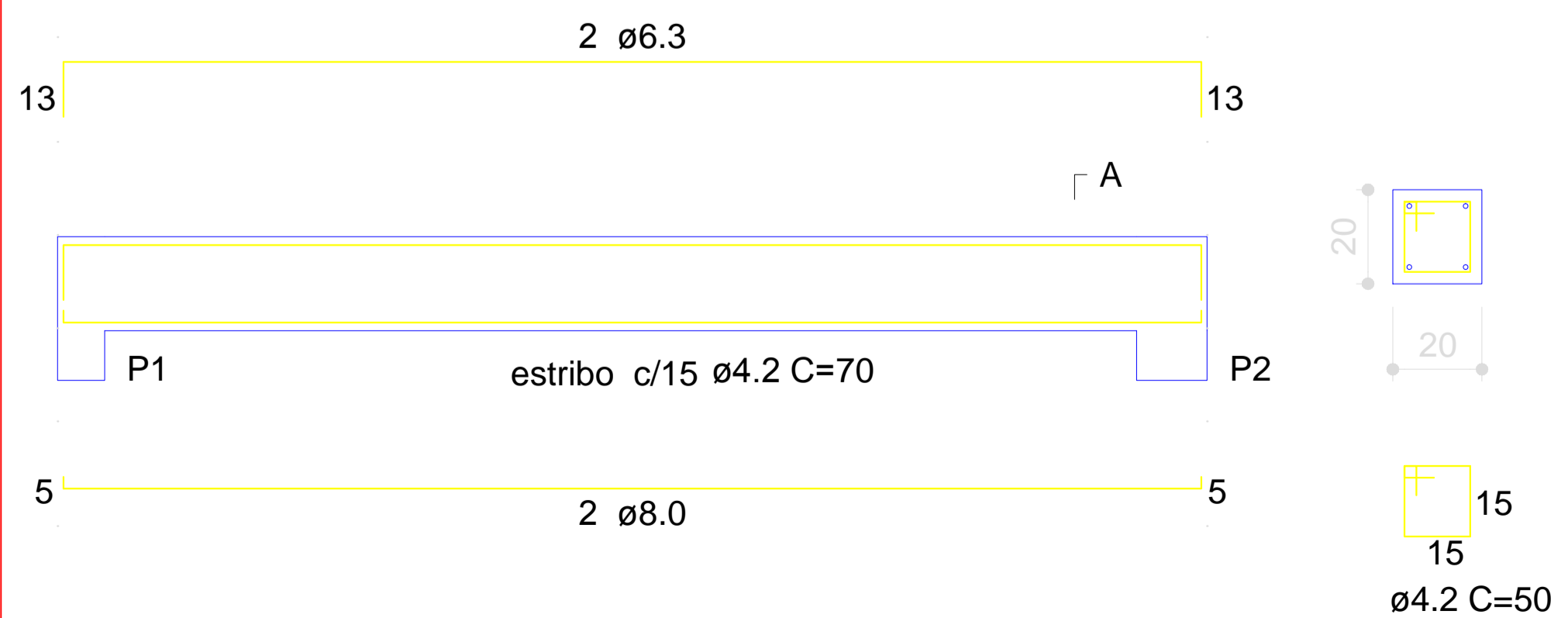
Solo compactado sobre a sapata  
peso específico > 1600.00 kgf/m<sup>3</sup>



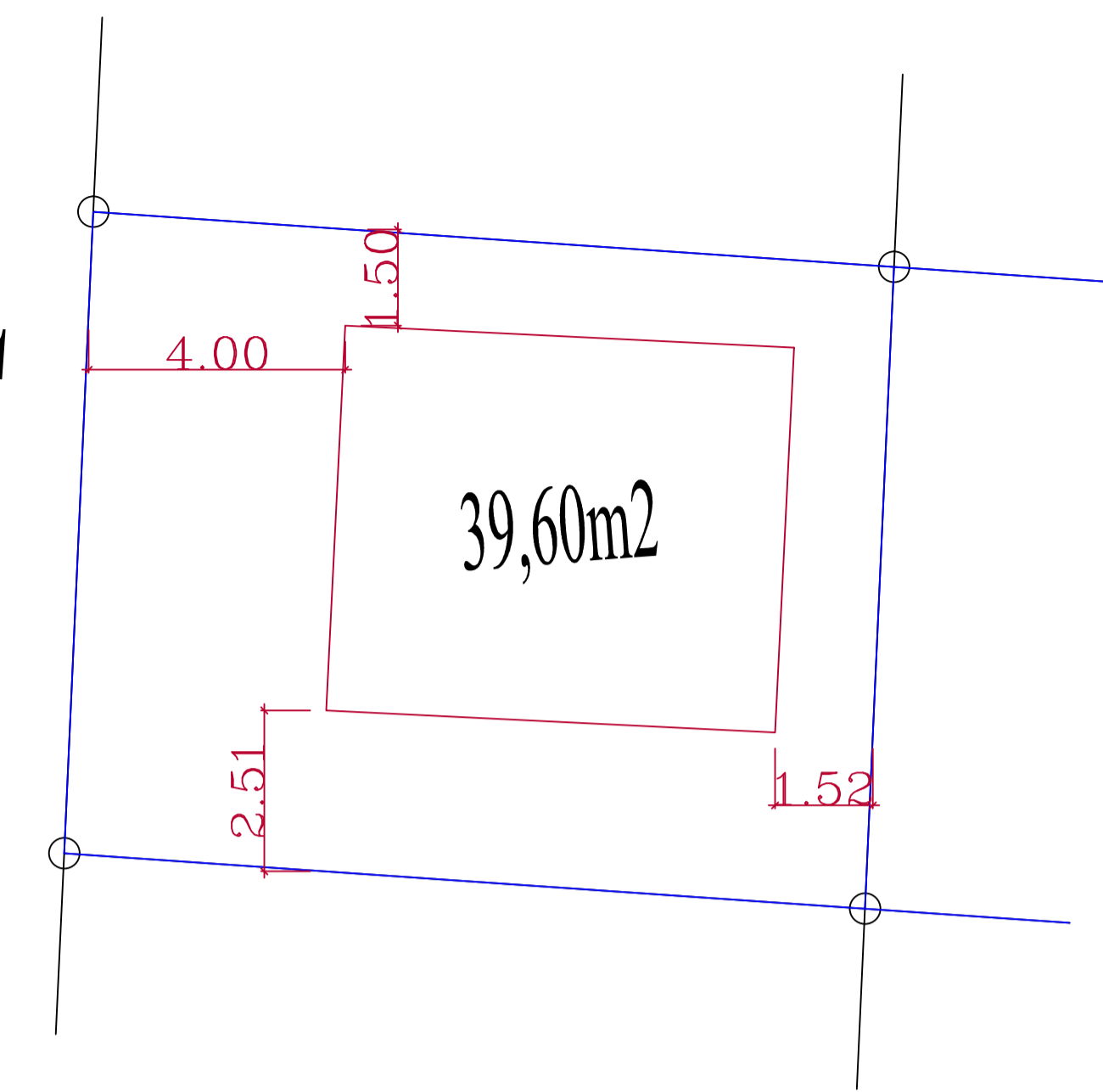
### VIGA SUPERIORES



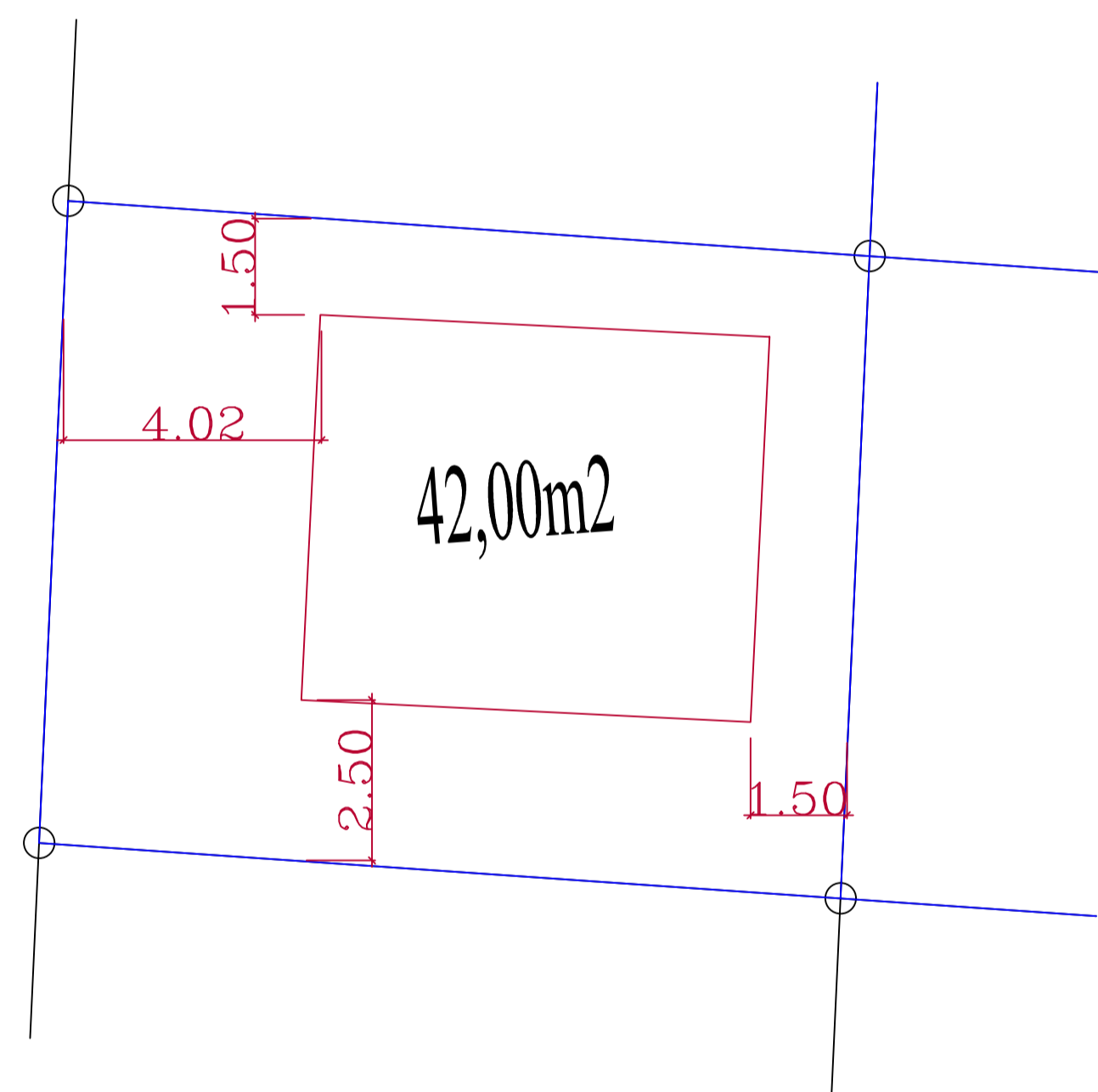
### VIGA DE BALDRAME



RUA



RUA



## PREFEITURA MUNICIPAL DE XAXIM

OBRA: <b>CASAS POPULARES</b>			
LOCAL: XAXIM - SC	ENDEREÇO: Rua ANGELO BOTAN.	Bairro: Santa Terezinha	EDIFICAÇÃO: Mista
SOLICITANTE: PREFEITURA MUNICIPAL DE XAXIM			PRANCHA:
PROJETO: DANIEL ZANETIN CREA-SC 083928-3			03/03
ÁREA DO TERRENO:	DATA: outubro/2010		
ESCALA: 1/50	ÁREA TOTAL:		